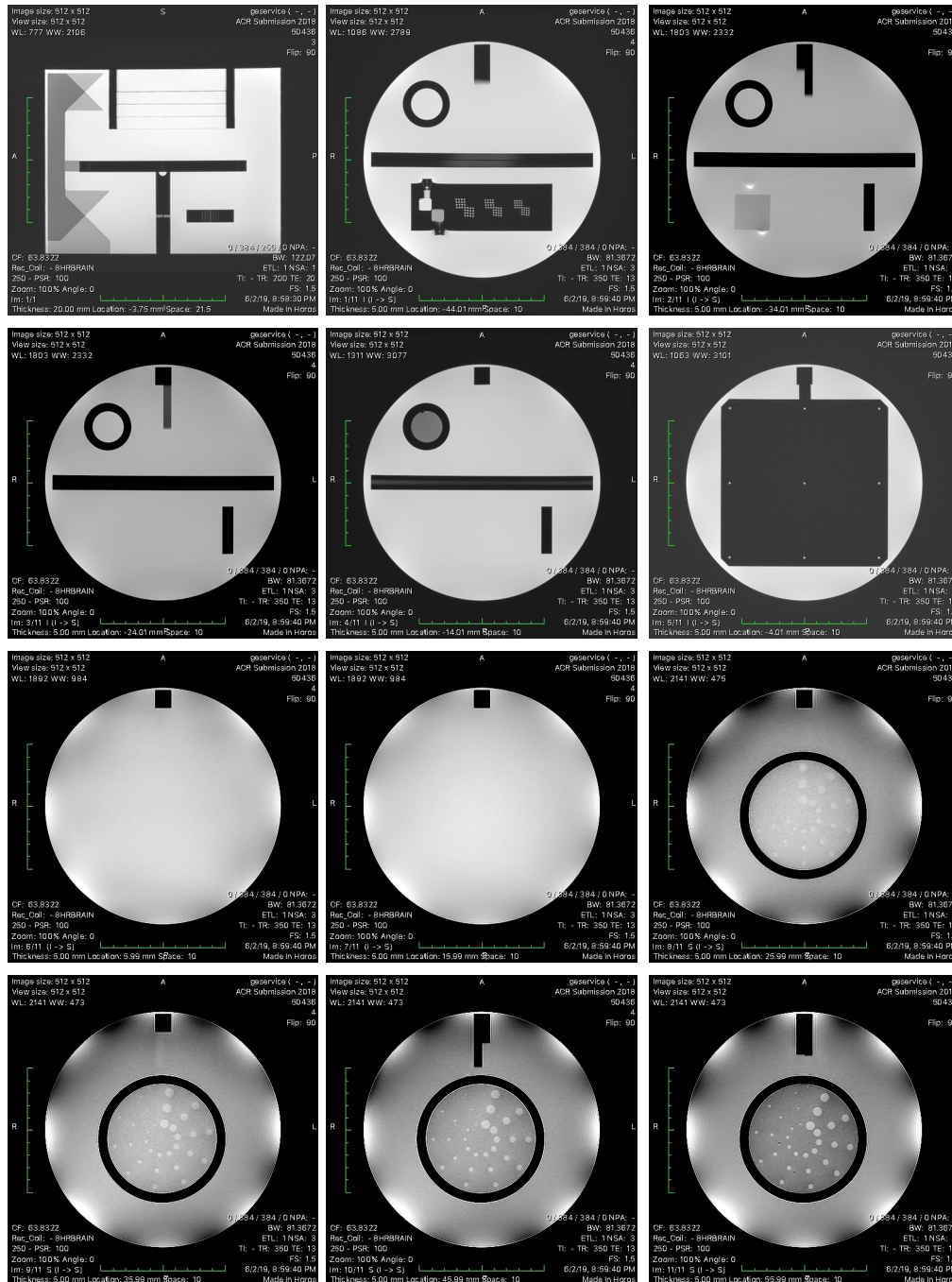
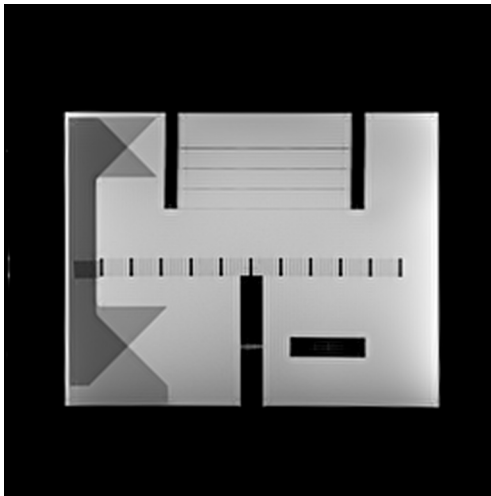


## New Geometry Grid (Slice #5) in the ACR Large Phantom

Starting in June of 2019, the grid structure of the ACR Large Phantom (slice #5) has been changed. While the functionality remains the same, to guide the orientation of the geometric accuracy measurements, there are a few obvious differences in the appearance. Below are high resolution images of a Sagittal Localizer and 11 Axial T1 images using the new phantom. The main difference is that the original grid structure of slice #5 has been replaced by a solid piece of plexiglass with a 3 x 3 grid of 9 holes in it. The holes are spaced 60 mm apart. There are no other relevant changes.



Side by side comparison of ALL of the relevant changes with the new insert.  
There are NO other changes.  
All slice positions and measurements remain the same.

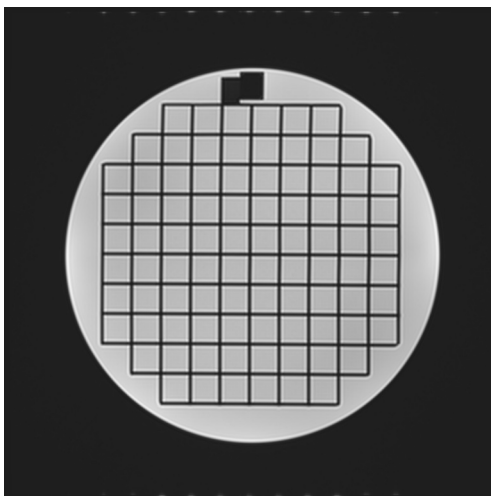


Original Sagittal Localizer

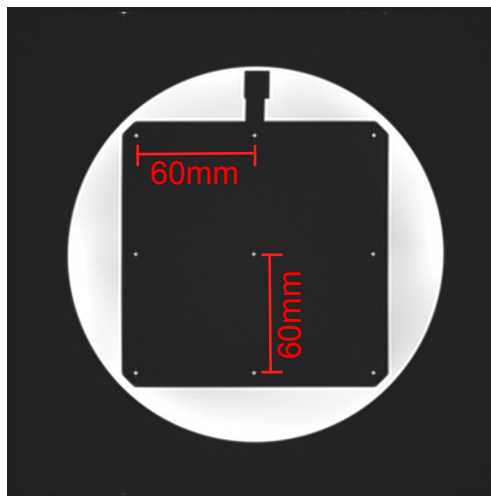


New Sagittal Localizer

Solid bar instead of  
grid structure.

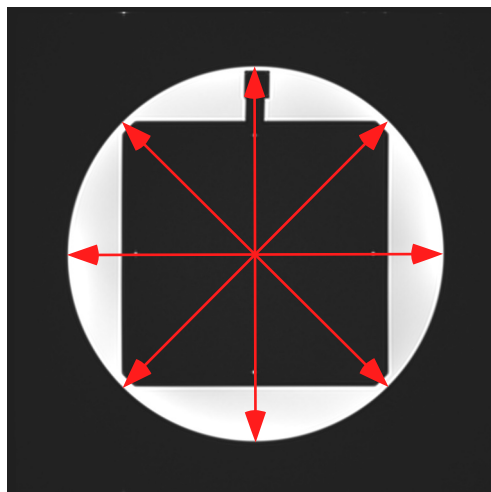
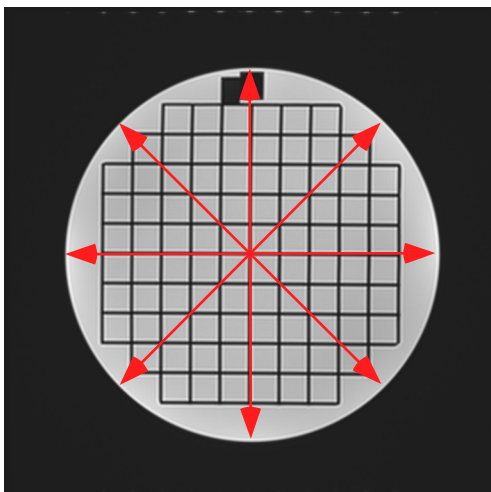


Original Slice 5



New Slice 5

3 x 3 grid of holes



Diameter measurements are still 190mm